



Williamsburg Township Newsletter

Ohio

www.williamsburgtownship.org

P.O. Box 499, Williamsburg, Ohio 45176-0499

FALL / WINTER 2021-2022

Bari Henning
Trustee
724-2994

Gary Jordan
Trustee
724-5315

Guy Bainum
Trustee
724-6553

Gregory W. Carson
Fiscal Officer
724-8333

Township Trustee Meetings ~ 2nd & 4th Monday 7:00 PM at Township Hall, located on Alexander Ln.

Williamsburg Township Newsletter can be seen at Williamsburgtownship.org

Village of Williamsburg Newsletter can be seen at Williamsburgohio.org

From The Trustees

Driving by Nestle Purina site on State Route 32 is attention getting. It is difficult not to look over to see what has changed from the previous day. As the sprawling site continues to grow and structurally take shape, the expanding 1.2 million square feet initiative reflects a silhouette of what will become a technically advanced manufacturing-warehouse operation. Obviously, the building process is very aggressive using over 3,000 tons of structural steel, 23,000 yards of concrete, and approximately 19,080 truckloads of gravel, which equates to over 477,560 tons of gravel, to date. As the site increases in size, the imagination drifts to what is the processing, packing, warehousing or loading areas. Noticeably, what has been accomplished to date is impressive, looking back to when the process started just over one year ago. Operations are projected to begin in 2023. Individuals interested in available job openings for Nestle Purina can search at purina-jobs.com/williamsburgtownship.

We know that as the opening date to Nestle Purina approaches, there will be more railroad activity and a lot more usage. Due to no or very little activity on the railroad tracks at this time, it is easy to be complacent and not attentive to safety. We all need to be more aware of the increased activity. Please reinforce this with new drivers in your family and with your friends to make them aware and ask them to be attentive. **Be Safe at the Railroad Crossings**. There needs to be heightened awareness to safety at the railroad crossings.

Investors have approached Williamsburg Township concerning zoning changes from R-2 Residential District and A-1 Agriculture to B-2 General Business at the intersection of James E. Saul's Sr. Drive and Half Acre Road (across from Design Within Reach). Their intent is to put a hotel on the property, as well as two restaurants. The zoning resolution has been adopted to zone the property to B-2 General Business.

Arbor Homes has approached Williamsburg Township concerning building a PUD (Planned Unit Development) subdivision. A Planned Unit Development, in this case, is a community of single-family homes where every homeowner belongs to a Home Owners Association (HOA). They are working with the Clermont County Office of Economic Development and Williamsburg Township Zoning to start the process on requirements and restrictions. There is a lot of zoning requirements that are expected to be met and some conditions to be discussed and agreed on. Arbor Homes has made an initial presentation on their intent. The initiative would, as suggested by Arbor Homes would include a park, city water, sewage lift stations, underground electric, to include roads and sidewalks zoned properly. This project is still in the approval stage and has not been approved as of this date.

There have been four or more power outages over the last several months. With winter quickly approaching, the matter is even more troublesome. The Williamsburg Township Trustees have raised issue with these outages with Duke Energy. Chad Shaffer, Government and Community Relations, Duke Energy – Ohio & Kentucky and Mr. Tom Gooch, Director of Customer Delivery and Area Operations - Duke Energy has been kind enough to be present at a recent meeting to reassure us that the problem has been addressed. Mr. Shaffer stated, "I wanted to provide you with some information regarding recent power outages in the area that customers have experienced. In recent days, there have been some unexpected issues with isolated outages in the immediate area on our Eastwood 51 circuit. These unplanned outages are attributed to work we are doing to upgrade the system to account for increased capacity needs in the area.

I know power outages are very frustrating and can certainly impact the daily lives of our customers, especially with so many people still working from home. In response to these issues, we have engaged leadership in our Customer Delivery and Power Quality/Reliability teams who have given this matter top priority. These recent unplanned outage events are specifically attributed to improvements which are being made along Half Acre Road where the line is being upgraded and additional fusing is being added. These enhancements will help to isolate issues that may occur on our lines and improve reliability as we plan for existing and future load growth in the area.

As you know, we are also moving forward with construction of our Half Acre substation, which has been in the works for some time since we first purchased the land back in January 2019 to account for growth and increased capacity needs in the area. The line work along Half Acre Road is complimenting these system enhancements and will help to isolate any issues that may occur on our lines. As of October 7th, our Customer Delivery team reports that the line upgrade work has been completed, which should help to mitigate future events.

It is also important to note that the work being completed in this area is representative of work we are doing all around our service territory to improve the grid, account for growth we are seeing or projecting on our system, and to better serve customers. In

- Continued From Page 1 -

addition to the line upgrades, we will also be installing additional self-healing teams on the grid in the area, which will further isolate and reduce outage times for customers. This work will double the amount of these smart devices on the circuit.

We continually evaluate our outage data to determine the best option to enhance reliability for our customers, and that is how we identified the need to make upgrades on the lines in this particular area. We apologize for the inconveniences these outages have caused our customers in the area and appreciate their patience."

Williamsburg Township Trustees are appreciative they took the time to help us understand their challenges and what is being done as the economic development needs continues to grow throughout the corridor area.

The Clermont County Trustees Association October meeting was held at the Clermont County Sheriff's Department. During this meeting, Clermont County Sheriff Robert Leahy showed us the upgraded firing range that has stationary and mobile targets. The quality of the range is what other communities would hope for. We also had the opportunity to view the Virtra Training simulator that the Sheriff's Department uses for training. The Virtra simulator is used throughout the year for scenario-based training. Videos of real-world response to various call scenarios that focuses on verbal commands, as well as, decision making, appropriate response to resistance and life saving measures are utilized. Watching the simulator was an eye-opening experience that made it clearly evident how challenging and stressful their job can be! These upgraded resources have been implemented under the leadership, vision, and watch of Sheriff Leahy. We are grateful for the quality of protection they give us every day. Job well done!

As we state in every fall newsletter, winter is just around the corner. Just a reminder, when the condition of roads and highways within Clermont County has become impaired as the result of snow or ice, a snow advisory may be declared and conveyed to all electronic and print media within the Greater Cincinnati area. In Clermont County snow emergencies are used sparingly, and only when roadway conditions are treacherous throughout the entire county. There are three levels of snow advisories. This information can be viewed at www.clermontsheriff.org. Our goal is to keep everyone safe and our township roads clear.

It has been a tough year for everyone, concerning the pandemic and COVID. The Clermont County Board of Health team, led by Julianne Nesbit, Clermont County Health Commissioner, stays current on the community health needs. This team works hard each day to make sure our community is health wise and safe. This is a tremendous team to answer your questions or give you information and guidance on COVID or many other health related topics. Their website can be located at www.ccphohio.org. They are there for us and you can count on them. Stay well!

It has been a tough year in so many ways for most of us. As we face into 2022, we wish you all the Blessings for Thanksgiving and God's Grace during the Christmas Holidays! Be safe, stay strong, and remain well, as a community.

Our Community is a tremendous place to live and an incredible place to raise a Family!

Respectfully,

Bari Henning, Gary Jordan, Guy Bainum

Williamsburg Township Zoning, Roads & Cemetery

Roads & Cemetery

The Township Trustees had Alexander, Ellis, Story and McKeever SchoolHouse Roads paved this year. The Township Maintenance Department is ready for the snow and ice season this year. We have approximately 110 tons of salt on hand and have another 200 tons on order if we need it. The mowing season is winding down for the year. After November 25, if you place items in the grass in the Cemetery the items will be left unless they need to be moved for a funeral. If you need to purchase graves call the Township Maintenance Office at 513-724-1110 to make an appointment.

Zoning

Any Township resident that has a complaint & wants to know the outcome of an inspection will need to leave a number so that you can be reached. There will be an explanation for you to let you know what can and/or cannot be done at the Township level. The Williamsburg Township Zoning Resolutions have rules and regulations that are followed. The Township Attorney is contacted if there are questions concerning the Resolutions and Ohio Revised Code.

The zoning office is open by appointment only by calling 513-724-5529.

Brian Tatman

Williamsburg Township

Zoning, Roads & Cemetery Supervisor

btatman@williamsburgtownship.org

News from your Emergency Services

If you have an emergency call 911 and not the Firehouse. If you call the firehouse, it could delay the care you need. There is no guarantee that someone will answer your call for help due to us being out of the station on a run. 911 has trained crews to help talk you through care until emergency units arrive.

Please remember to cut back tree branches along driveways, so we can get our apparatus down to you. We have been running into situations, to where we can't get through due to tree branches blocking access.

From the members of WTES have a safe and Merry Christmas.

Kevin Wiedemann

Chief

Harmony Hill



The celebration of General William Lytle's 251st birthday, the Father of Clermont County, and the dedication of the reconstruction of his Land Office were held this past September. In 1800 Surveyor (Major General) William Lytle built a land office through which hundreds of thousands of acres of land were purchased. The area of these surveys included today's Clermont and Brown counties. Through the efforts of the Southwest Ohio Surveyors' group, a foundation wall was found as evidence for the location of the Land Office. This 18' by 18' reconstruction project started in the Spring of 2021 after receiving grants, donations from Harmony Hill members, and many interested individuals. Much of the labor and supplies for the Land Office were voluntarily donated. The Board members of Harmony Hill Dairy House and Museum wish to express their heartfelt appreciation to the many volunteers who worked without payment for their services to recreate this structure.

The Board Members look forward to having visitors to Harmony Hill Dairy House and Museum free of charge the first Saturday of each month during the hours of 1-4 pm. Appointments for other times are available.

HISTORY NOTES above are courtesy of the HARMONY HILL ASSOCIATION, INC.

MEMBERSHIP IN THE HARMONY HILL ASSOCIATION ARE TAX DEDUCTIBLE. TO JOIN, SIMPLY FILL OUT THE FOLLOWING APPLICATION AND SEND TO: Harmony Hill Association, Inc., % Beth Barth, 3905 Elston Hockstock Rd., Batavia, Ohio 45103. We will send you a receipt for tax purposes. Checks should be made payable to Harmony Hill Association, Inc.

Check one:

☐ Lifetime Family Membership - \$100

☐ Annual Family Membership - \$24

☐ Annual Single Adult - \$12

☐ Annual Student (K-12) - \$3

Corporate memberships or donations from individuals are also gladly accepted!

Name(s) _____

Phone _____

Street Address _____

Email _____

City _____

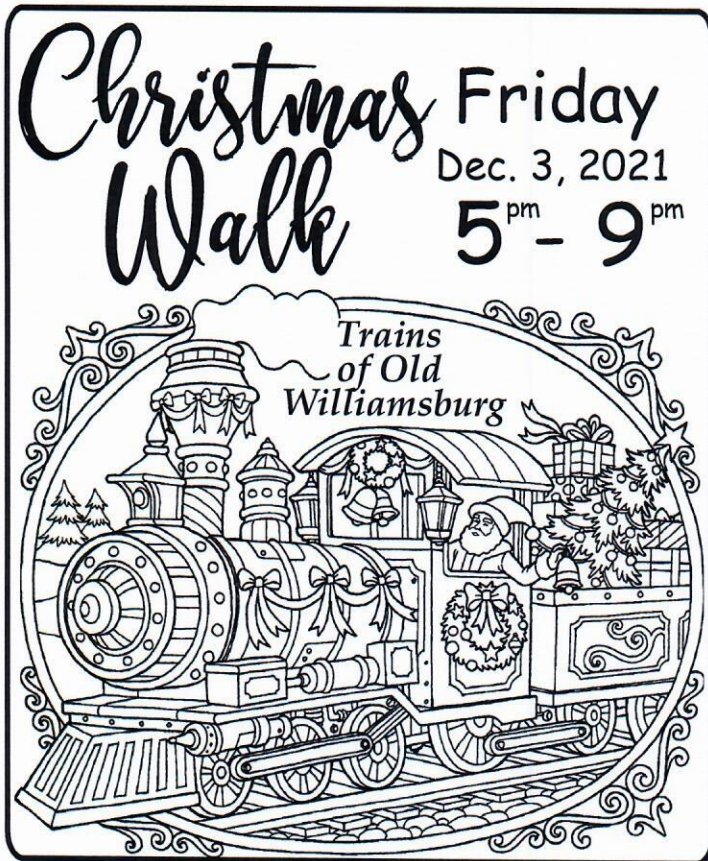
State _____

Zip _____

Amount enclosed: \$ _____ Membership _____ Donation _____

Annual memberships are effective from January 1- December 31.

Visit the Harmony Hill Museum and Clermont County Historical Society Museum the first Saturday of each month from 1 P.M. to 4 P.M. at 299 South Third Street, Williamsburg.



OR CURRENT RESIDENT

Keeping you informed.

Williamsburg Township Newsletter
P.O. Box 499
Williamsburg, Ohio 45176-0499

BULK RATE
U.S. Postage Paid
Williamsburg, Ohio 45176
Permit # 56